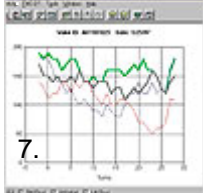


Wachs Valve Operators



- 1. Pow-P-Drive II
- 2. Pow-R-Arm
- 3. RS-2
- 4. TM-7
- 5. Swivelling TM-7
- 6. Turn-N-Count
- 7. ValveCard 1.2

Valve Operators

E.H. Wachs offers many options for efficient valve maintenance of water, waste water and pipeline valves and exercising applications, including:

- Handheld manual valve turners
- Lightweight, hand-powered valve turners
- Semi and permanent mounts for rising and non-rising stem valves
- Truck-mounted valve operators, automated and manual control
- Valve distribution software, for managing and collecting valve information
- Custom mount applications and equipment combinations

Pow-R-Drive II

A portable, lightweight, hand-powered valve turning machine, perfect for hard-to-reach locations.

Pow-R-Arm

Mobile support attachment turns your Pow-R-Drive into a valve turning system.

RS-2

This portable, multifunctional Valve Operator for rising and non-rising stem valves delivers up to 800 ft./lbs. torque and a maximum of 55 rpm for fast, reliable opening and closing of water, wastewater, pipeline and petrochemical valves.

TM-7

The Truck-Mounted Valve Operator allows automatic turning of valves 4" (101.6mm) and larger. Exercise stubborn valves safely while collecting valve data.

Swivelling TM-7 Valve Maintenance System

Bed- or trailer-mounted 180° Swivelling Valve Operator is built to meet your needs by combining optional valve maintenance equipment to create a custom valve maintenance system for your utility.

Turn-N-Count

A ratcheting "T" wrench designed to turn utility valves and fire hydrants of all types and sizes.

ValveCard 1.2

Now water utilities can manage their valve distribution system from a desktop PC using "ValveCard 1.2," an Interactive Valve Management software program.

Vic/Tas/SA 03 9993 7500	NSW 02 9663 2322	NZ 09 414 5080	QLD/NT 07 3890 8533	WA 08 9248 8999
----------------------------	---------------------	-------------------	------------------------	--------------------

All written data and statements herein are provided in good faith and believed to be reliable and appropriate at the time of drafting this document. However it is given without implied or express guarantee. Potential uses are urged to trial and /or conduct conformity test of the product to deem its suitable in application for a particular end use prior to purchase.