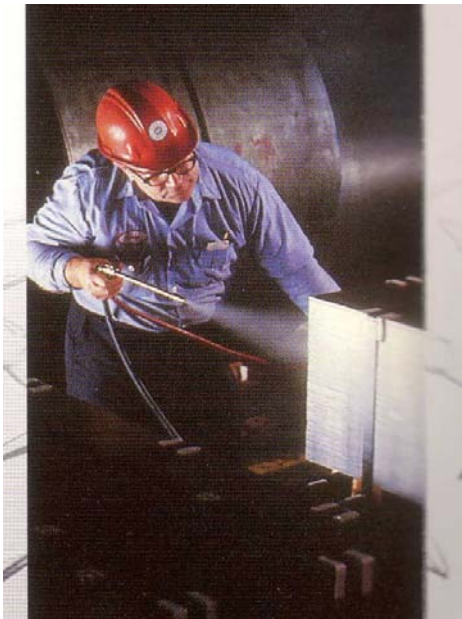
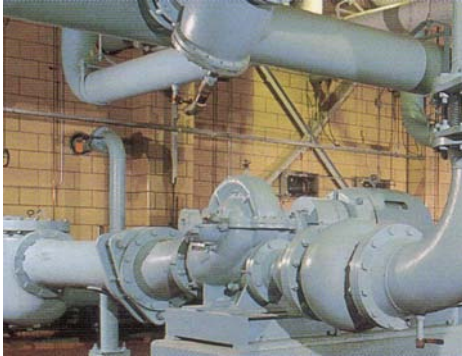


Cortec

Corrosion Protection Solutions Liquid Coatings



Corrosion is a major cost to industry, the range of goods available from Cortec can help reduce these costs. Solutions in the liquid range are suitable for

- Metalworking*
- Coating Steel*
- Solution Additives for internal of pipes and fittings*
- Concrete reinforcement*
- Protection of electrical components*

Metal working

Cortec range includes water and oil base concentrates and liquids. These solutions can be used for protection of machined surfaces, removal of rust, and protection of steel during fabrication stages. Some varieties do not require the coating to be removed whilst being fabricated, including cutting and welding.

Coating Steel

A range of products are available, from temporary fogging solutions, to hand spray applications, and longer lasting primers for extended corrosion protection.

Additives

Various additives are manufactured to suit a wide range of industry groups. These additives help control internal corrosion of pipe, fitting and cooling towers.

Protection of electrical components

Various Cortec products are manufactured to suit a wide variety of application. The coatings still allow for work to be carried out on the printed circuit boards including soldering.

Ionic Action of VCI creates a modular, inhibiting layer.

- *Vapourizes*
- *Conditions enclosed atmosphere with a protective vapour.*
- *Vapor migrates to all recessed area of the cavities.*
- *Vapour condenses on all metal surfaces.*
- *Ions dissolve in moisture layer (water electrolyte).*
- *Protective ions are attracted to the metal surfaces.*
- *Ions form a thin, monomolecular protective layer at the metal surface.*

Protective layer re-heals and self-replenishes through further condensation of the vapour.

1. *Additives for internal of pipelines and fittings*
2. *Selection of liquid pump coatings.*
3. *Metal working coatings*

| | | | | |
|----------------------------|---------------------|-------------------|------------------------|--------------------|
| Vic/Tas/SA 03 9993 7500 | NSW 02 9663 2322 | NZ 09 414 5080 | QLD/NT 07 3890 8533 | WA 08 9248 8999 |
|----------------------------|---------------------|-------------------|------------------------|--------------------|

All written data and statements herein are provided in good faith and believed to be reliable and appropriate at the time of drafting this document. However it is given without implied or express guarantee. Potential users are urged to trial and /or conduct conformity test of the product to deem its suitable in application for a particular end use prior to purchase.